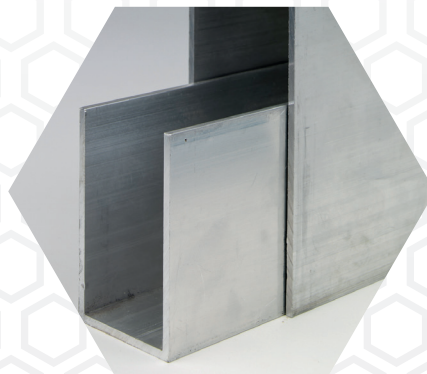
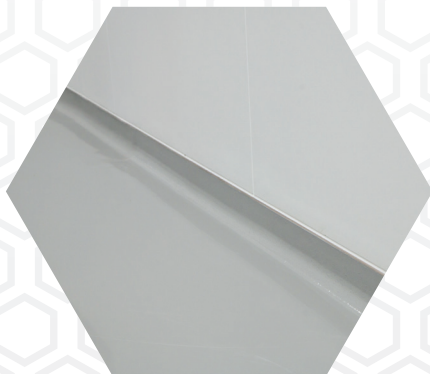


Adjustable Recessed Base



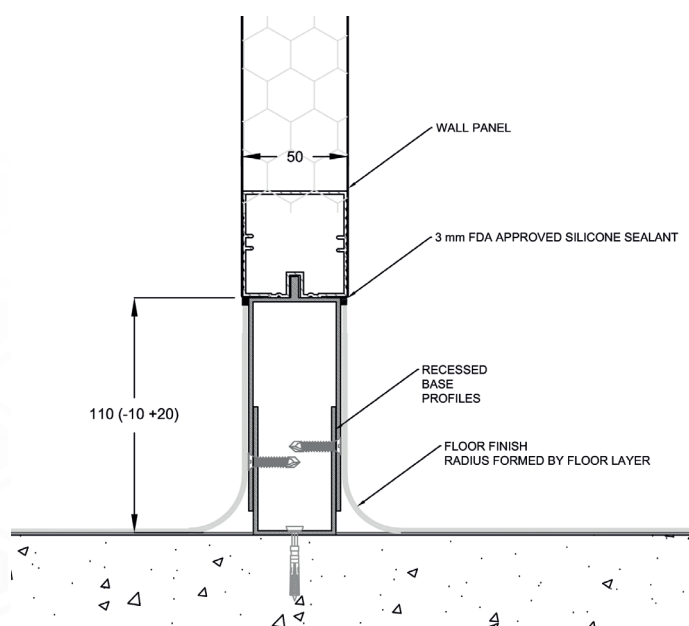
Adjustable,
aluminium floor
track

Recessed base is a two part floor track system that allows for adjustable heights. It provides a solid, level and flush interface between wall and floor.



See over for technical
specifications

Adjustable Recessed Base



- High specification aluminium adjustable base
- Two parts including base channel and adjustable panel interface
- Fits into our Puracore® extrusion

Summary Specification

Components	Base panel and adjustable panel interface
Thickness	2.5mm
Dimensions	For 2mm vinyl flooring: adjustable height 100-130mm
Maximum Length	3000mm
Material	Aluminium 6063 extrusion
Finish	Flush finish between 2mm vinyl flooring and panel
Sealing	Panel fits directly onto adjustable panel interface and can be sealed in place
Fixing	Base channel fixed directly to existing floor with hammerscrew or fixings suitable for floor substrate. Upper section drilled and countersunk at 500mm centres. Fixing screws supplied
Accessories	Floor cove formers supplied by flooring suppliers



Puracore®



Puracore, 3 Portview Road, Avonmouth, Bristol, Avon, BS11 9LQ, United Kingdom



+44 (0) 117 316 7025



sales@puracore.com



www.puracore.com

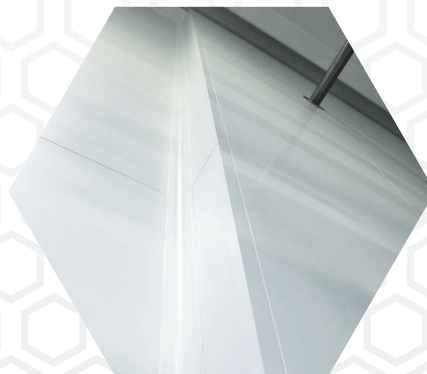
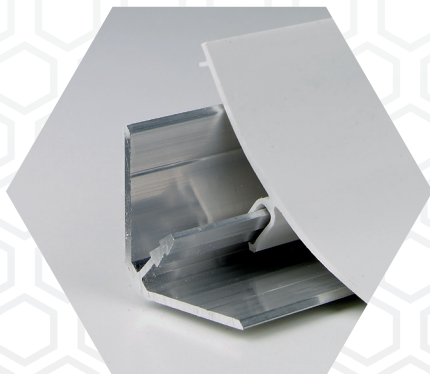
Aluminium and PVC Coving



Coving
designed to
eliminate
corners

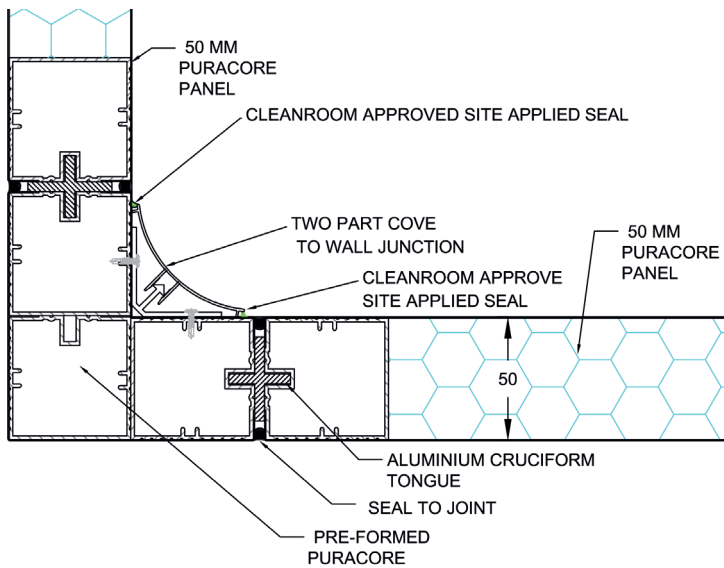
Coving provides a way to eliminate 90° angles within the cleanroom environment. Supplied in 2 parts, the coving provides a rounded, flush and easy to clean corner.

Welded aluminium internal and external corners available.



See over for technical
specifications

Aluminium and PVC Coving



- Create fully flushed corner transitions and seamless wall-ceiling connections
- Corner cups available for 3 way connecting coving

Summary Specification

Components	Aluminium or PVC
Dimensions	65mm radius x 4000mm
Materials	Aluminium 6063 backing angle. PVC facing
Fixing	Backing angle fixed with screws and coving clips into place
Sealing	Coving can be sealed at either edge with proprietary sealant



Puracore®



Puracore, 3 Portview Road, Avonmouth, Bristol, Avon, BS11 9LQ, United Kingdom



+44 (0) 117 316 7025




sales@puracore.com



www.puracore.com

Clamp Frame Door



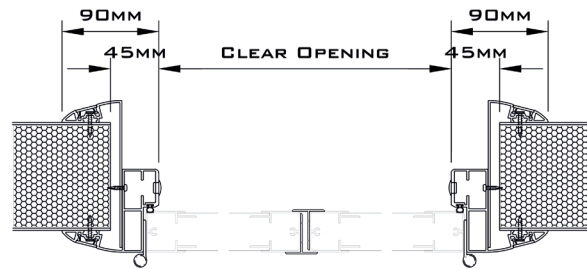
Semi-flush
door solution

The Puracore[®] clamp frame door is a semi-flush solution with easy 'clamp style' installation. Available in a range of finishes, sizes and vision panels.



See over for technical
specifications

Clamp Frame Door



- Single or double leaf semi flush doors
- Clamp frame to suit panel thickness
- Stainless steel handles and accessories
- Range of vision panels, styles, sizes, interlocks and other accessories

Summary Specification

Overall Thickness	50mm
Clear Width & Height	Made to order
Dimensions	Made to order. Leaf thickness 50mm
Finish	PVC/Powder Coat/Stainless Steel
Vision Panel	Glazed 6mm glass, single or double glazed, standard dimensions: 300mmx400mm, 400mmx600mm, 500mmx800mm - other sizes by special request. Half glass door leaf option also available
Drop Seal	Drop seal fitted as standard
Standard Furniture	Surface mounted door closer Nylon/stainless steel/steel handles Stainless steel non-flush mount hinges and screw-in flush strike plate
Thickness	50mm
Dimensions	Made to order
Material	Silver anodised or aluminium extruded flush frame
Seal	Silicone, PVC or EPDF gasket bounded to surround



Puracore®



Puracore, 3 Portview Road, Avonmouth, Bristol, Avon, BS11 9LQ, United Kingdom



+44 (0) 117 316 7025




sales@puracore.com



www.puracore.com

Clamp Frame Vision Panel



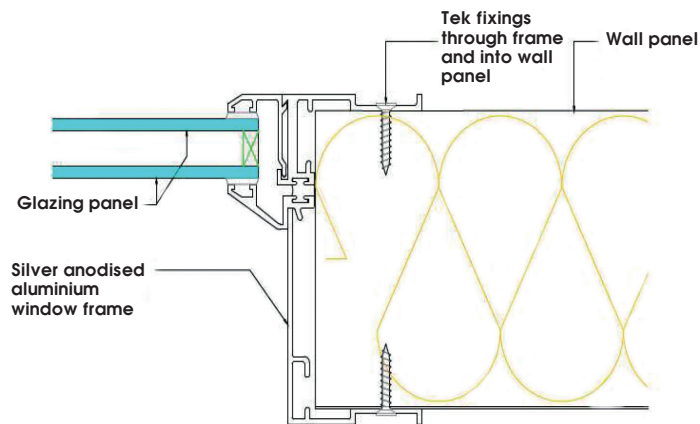
Ideal solution
for lower
specifications

The clamp frame window is ideal where a fully flush environment is less important, offering an ideal solution for lower specification cleanrooms or semi-conductor environments as appropriate.



See over for technical
specifications

Clamp Frame Vision Panel



- Single, double or triple glazed window available
- High specification aluminium frame, powder-coated to project requirements
- Toughened glass or polycarbonate glass
- Vision panels available in 150mm x 1200mm to meet DDA requirements

Summary Specification

Thickness	Overall 63mm
Maximum Dimensions	1000mm x 2000mm
Protrusion from Panel Face	7mm
Glazing	Single/double/triple glazed
Glass	6mm toughened glass/laminated glass/polycarbonate
Window Frame	Aluminium
Finish	Polyester powder coat/anodised silver
Weight	6mm toughened glass 23kg/m ² 6mm polycarbonate glass 16kg/m ²
Tolerance	+0 to -5mm



Puracore®



Puracore, 3 Portview Road, Avonmouth, Bristol, Avon, BS11 9LQ, United Kingdom



+44 (0) 117 316 7025



sales@puracore.com



www.puracore.com

Cleanroom Ceiling Panel



Specialist high
load cleanroom
ceiling panel

65mm

Puracore[®] have developed market leading 65mm aluminium honeycomb panels for a high load ceiling deck which can take loads up to 3kN per m² with 2.5m spans.

50mm

Puracore[®] 50mm panels can also be utilised as ceiling panels. These cleanroom ceiling decks are walk-on when installed using our ceiling hanger systems.



See over for technical
specifications

Cleanroom Ceiling Panel

Panel Thickness	Panel Span (mm)	Maximum Load
50mm	2500	1.8kN/m ²
50mm	3000	1.8kN/m ²
50mm	2500 with apertures	1.8kN/m ²
50mm	3000 with apertures	1.0kN/m ²
65mm	2500	5.5kN/m ²
65mm	3000	2.9kN/m ²
65mm	2500 with apertures	3.8kN/m ²
65mm	3000 with apertures	2.0kN/m ²

Calculations based on span over 210 and a standard point load of 0.25kN. Max load rounded to one decimal point.

Summary Specification

Thickness	50mm / 65mm
Standard Dimensions	1200mm x 3000mm
Maximum Length	Up to 6000mm
Core	48.8mm thick $\frac{3}{4}$ " aluminium honeycomb (50mm) 63.8mm thick $\frac{3}{4}$ " aluminium honeycomb (65mm)
Facing Skin	0.5mm galvanised steel substrate (50mm) 0.7mm galvanised steel substrate (65mm)
Finish for Galvanised Steel Substrate	PVC laminate/polyester/primer painted/P.E.T.
Panel Frame	Aluminium 6063 box profile extrusion 4 sided
Adhesive	Twin pack solvent free adhesive @ 300g/m ² per face
Tongue Options	Flexible PVC/rigid PVC/aluminium 4 side cruciform (50mm) Aluminium extruded cruciform (65mm)
Weight	13kg/m ² (50mm) /16.89kg/m ² (65mm)
Fire Ratings	ASTM E84 Class A. FM Approvals 4882 and 4880



Puracore®



Puracore, 3 Portview Road, Avonmouth, Bristol, Avon, BS11 9LQ, United Kingdom



+44 (0) 117 316 7025



sales@puracore.com



www.puracore.com

Concealed Conduit Panel

Custom
panels to fit
conduits and
services



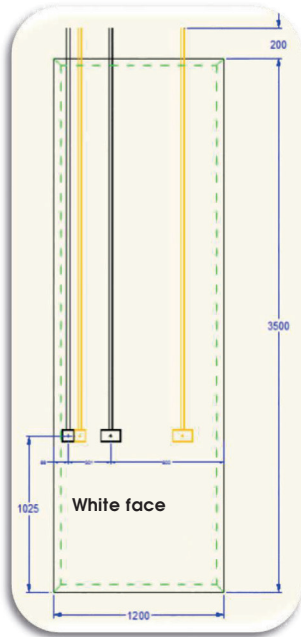
This specialist panel is manufactured to incorporate switches, fire alarms and other conduits seamlessly into the wall panel.

These concealed conduits can be placed to suit your requirements on a project specific basis.



See over for technical
specifications

Concealed Conduit Panel



- The concealed conduit's PVC tube can link to either a flush back box on the front or back of the panel
- Panels match the rest of the Puracore® system and fit in seamlessly
- Can be placed to suit your requirements

Summary Specification

Thickness	50mm to match Puracore® wall panels
Standard Dimensions	Manufactured to suit project requirements
Core	48.8mm thick $\frac{3}{4}$ " aluminium honeycomb
Facing Skin	0.5mm galvanised steel substrate with specified finish - stainless steel/aluminium powder coat
Finish for Galvanised Steel Substrate	PVC laminate/polyester/primer painted/P.E.T.
Panel Frame	Aluminium 6063 box extrusion to panel perimeter
Adhesive	Twin pack solvent free adhesive @ 300g/m ² per face
Tongue	To suit Puracore® wall panels
Weight	13kg/m ²
Maximum Dimensions	5800mm x 1200mm
Fire Ratings	ASTM E84 Class A. FM Approvals 4882 and 4880
Options	Non-standard back box sizes



Puracore®



Puracore, 3 Portview Road, Avonmouth, Bristol, Avon, BS11 9LQ, United Kingdom



+44 (0) 117 316 7025



sales@puracore.com



www.puracore.com

Flush Framed Vision Panel



Toughened
glass with fully
flush integration

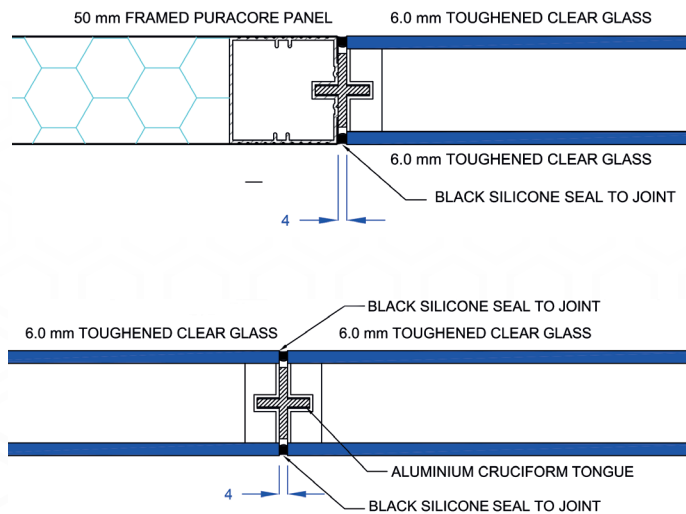
The high quality, fully flush vision panel is the most popular choice within the window range.

The window fits seamlessly into the Puracore[®] system, with aluminium frame manufactured to customer requirements.



See over for technical
specifications

Flush Framed Vision Panel



- Suitable for temperatures up to 24°C with relative humidity up to 75%
- Suitable for a temperature difference up to 10°C on each side of the unit
- Vision panels available in 150mm x 1200mm to meet DDA requirements

Summary Specification

Thickness	50mm
Dimensions	To suit project
Glass	6mm toughened glass both sides. Glass tint available
Panel Frame	Aluminium 6063 extrusion
Weight	Approximately 34kg/m ²
Maximum Dimensions	2400mm x 2000mm
Tolerance	+3mm to -0mm
Accessories	Magnetically operated integral blind available



Puracore®



Puracore, 3 Portview Road, Avonmouth, Bristol, Avon, BS11 9LQ, United Kingdom



+44 (0) 117 316 7025



sales@puracore.com



www.puracore.com

Fully Flush Cleanroom Door

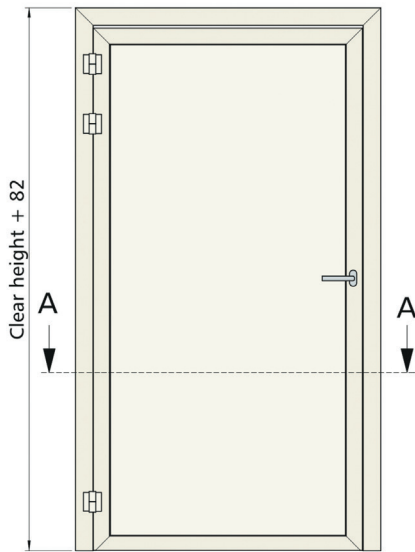
Seamless
integration with
our flush
cleanroom
system

The Puracore[®] flush door offers a fully flush solution to both faces. It integrates with the Puracore[®] panel system seamlessly and is available in a large range of different accessories and interlocking systems.



See over for technical
specifications

Fully Flush Cleanroom Door



- Leaf thickness 50mm with dimensions made to order – tailored to each project requirements
- Handles and accessories available in, but not limited to; stainless steel, steel and nylon
- Drop seals included as standard
- Traffic lights and interlocking systems available

Summary Specification

Overall Thickness	50mm
Clear Width & Height	Made to order
Dimensions	Made to order. Leaf thickness 50mm
Finish	PVC/Powder Coat/Stainless Steel
Vision Panel	Glazed 6mm glass, single or double glazed, standard dimensions: 300mmx400mm, 400mmx600mm, 500mmx800mm - other sizes by special request. Half glass door leaf option also available
Drop Seal	Drop seal fitted as standard
Standard Furniture	Surface mounted door closer Nylon/stainless steel/steel handles Stainless steel non-flush mount hinges and screw-in flush strike plate
Thickness	50mm
Dimensions	Made to order
Material	Silver anodised or aluminium extruded flush frame
Seal	Silicone, PVC or EPDF gasket bounded to surround



Puracore®



Puracore, 3 Portview Road, Avonmouth, Bristol, Avon, BS11 9LQ, United Kingdom



+44 (0) 117 316 7025

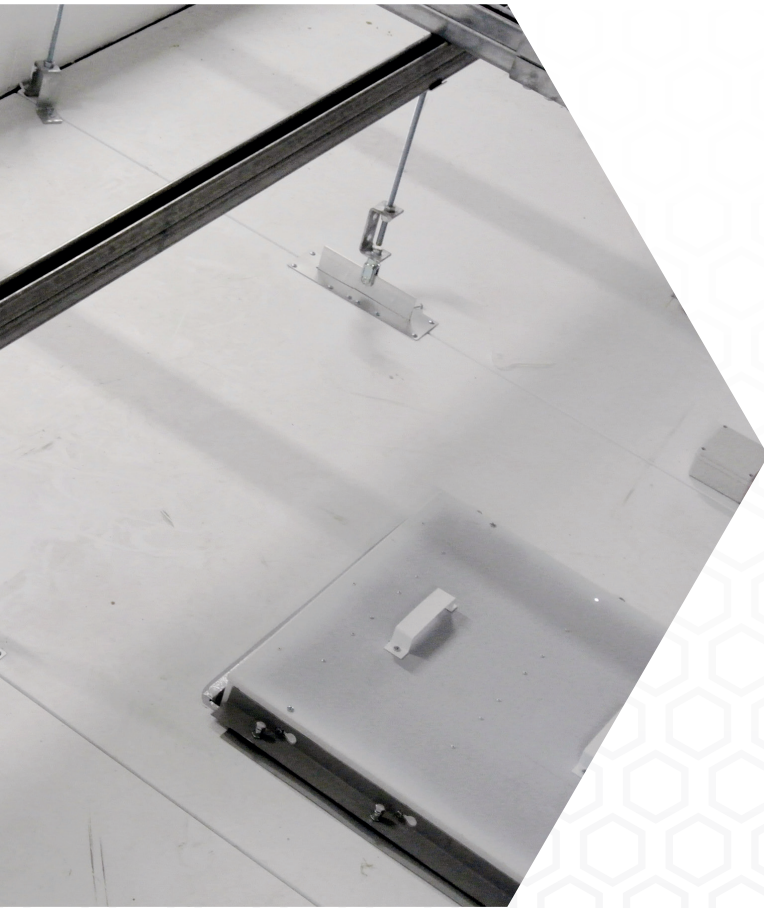


sales@puracore.com



www.puracore.com

Hidden Ceiling Suspension System



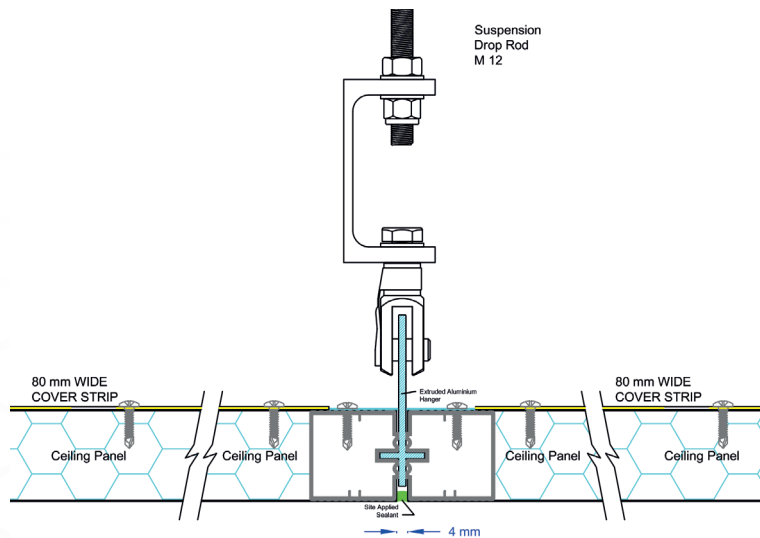
Fully
concealed
hanger system
for flush
ceiling

The Puracore[®] concealed suspension ceiling system provides a fully flush ceiling surface within the cleanroom environment, with the added benefit of walk-on capability.



See over for technical
specifications

Hidden Ceiling Suspension System



- Pull out resistance of 6.0kN per hanger per joint
- Hanger includes spacer bar, back cover strip and hanger split plate
- Fixed to ceiling or brackets using drop rods

Summary Specification

Components	C Bracket, M12 set screw complete with washer, clevis, clip & pin and hanging plate
Dimensions	Hanging plate clevis - 60mm x 18mm x 24mm. Clip and pin - 12mm diameter, also available to site drop rod
Material	Mill finish aluminium 6063 grade
Finish	PVC/powder coat
Fixing	Back cover plate with SDST 3.2 x 19mm fixings into panel. Clip and pin fixes to drop rods to suspend ceiling
Sealing	Applied to panel joint on-site
Ancillaries	Space bar, back cover strip, hanging plate cover plate
Design Pull Out Resistance	6.0kN per hanger per joint



Puracore®



Puracore, 3 Portview Road, Avonmouth, Bristol, Avon, BS11 9LQ, United Kingdom



+44 (0) 117 316 7025



sales@puracore.com



www.puracore.com

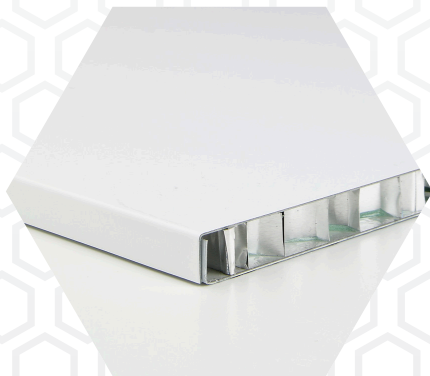
10mm Cleanroom Liner Panel



Lining panel
ideal for infills,
columns and
corridors

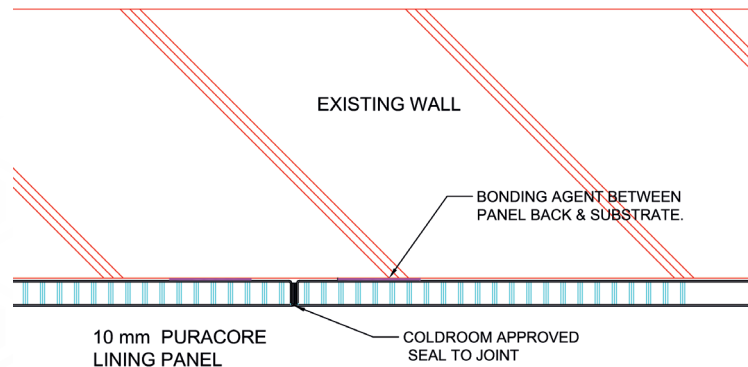
Puracore[®] 10mm aluminium honeycomb panels have been specifically designed to be used as cladding to existing walls/columns or to be fitted into a structural framing system.

These FM approved panels can simply be bonded to an existing structure allowing for an exceptionally easy and clean application.



See over for technical
specifications

10mm Cleanroom Liner Panel



- Perfect for upgrades to existing facilities
- 10mm FM approved panels feature an aluminium honeycomb core giving a lightweight and rigid panel with a high impact resistance
- The core of aluminium honeycomb means the panel is non-shedding, ideal for hygienic and controlled environments

Summary Specification

Thickness	10mm
Standard Dimensions	1200mm x 3000mm (-/+)
Core	9mm thick 1/2" or 3/4" aluminium honeycomb 3000 grade
Facing Skin	0.5mm galvanised steel substrate with specified finish - stainless steel/aluminium powder coat
Finish for Galvanised Steel Substrate	PVC laminate/polyester/primer painted/P.E.T.
Adhesive	Twin pack solvent free adhesive @ 300g/m ² per face
Weight	8.7kg/m ²
Maximum Length	3000mm
Joint	Butt joint for site sealing
Fire Ratings	ASTM E84 Class A. FM Approvals 4882 and 4880



Puracore®



Puracore, 3 Portview Road, Avonmouth, Bristol, Avon, BS11 9LQ, United Kingdom



+44 (0) 117 316 7025



sales@puracore.com



www.puracore.com

17.5mm Cleanroom Lining Panel



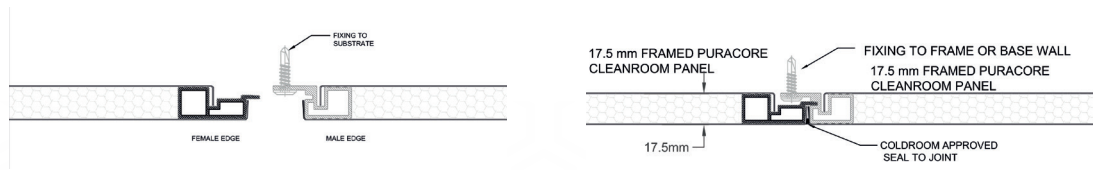
Cleanroom
lining system
unique to
Puracore[®]

Puracore[®] 17.5mm aluminium honeycomb lining system is an effective single wall option for any class of cleanrooms, and is perfect for lining existing block walls or studwork as well as upgrading existing facilities.



See over for technical
specifications

17.5mm Cleanroom Lining Panel



- Unique to Puracore®, this panel features our secret fixing extrusion for simple installation
- FM approved 17.5mm lining system panels feature an aluminium honeycomb core giving a lightweight and rigid panel with a high impact resistance
- The aluminium honeycomb core means the panel is non-shedding, ideal for cleanroom environments

Summary Specification

Thickness	17.5mm
Standard Dimensions	1200mm x 3000mm (-/+)
Core	16.3mm thick 1/2" or 3/4" aluminium honeycomb 3000 grade
Facing Skin	0.5mm galvanised steel substrate with specified finish - stainless steel/aluminium powder coat
Finish for Galvanised Steel Substrate	PVC laminate/polyester/primer painted/P.E.T.
Adhesive	Twin pack solvent free adhesive @ 300g/m ² per face
Weight	10.66kg/m ²
Joint	Interlocking edge extrusion to long sides secret fix. 4 sided extrusion option to allow stacking of panels for heights above 3000mm
Fire Ratings	ASTM E84 Class A. FM Approvals 4882 and 4880



Puracore®



Puracore, 3 Portview Road, Avonmouth, Bristol, Avon, BS11 9LQ, United Kingdom



+44 (0) 117 316 7025

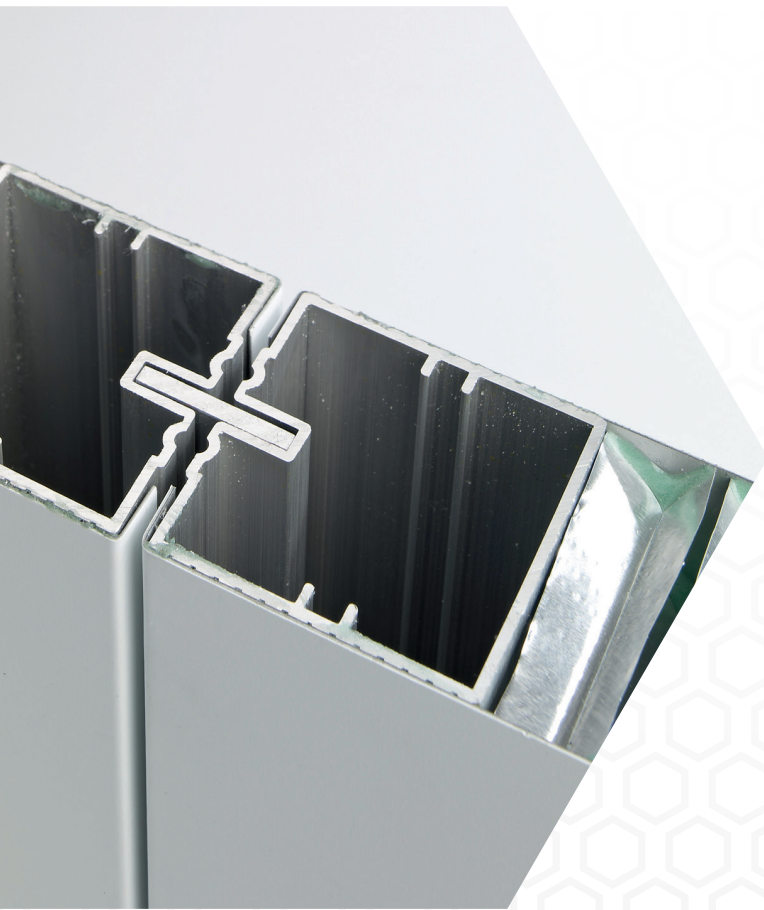


sales@puracore.com



www.puracore.com

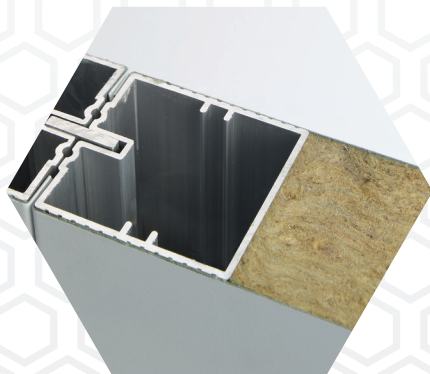
50mm Cleanroom Wall Panel



FM approved
cleanroom wall
panel for our
unique system

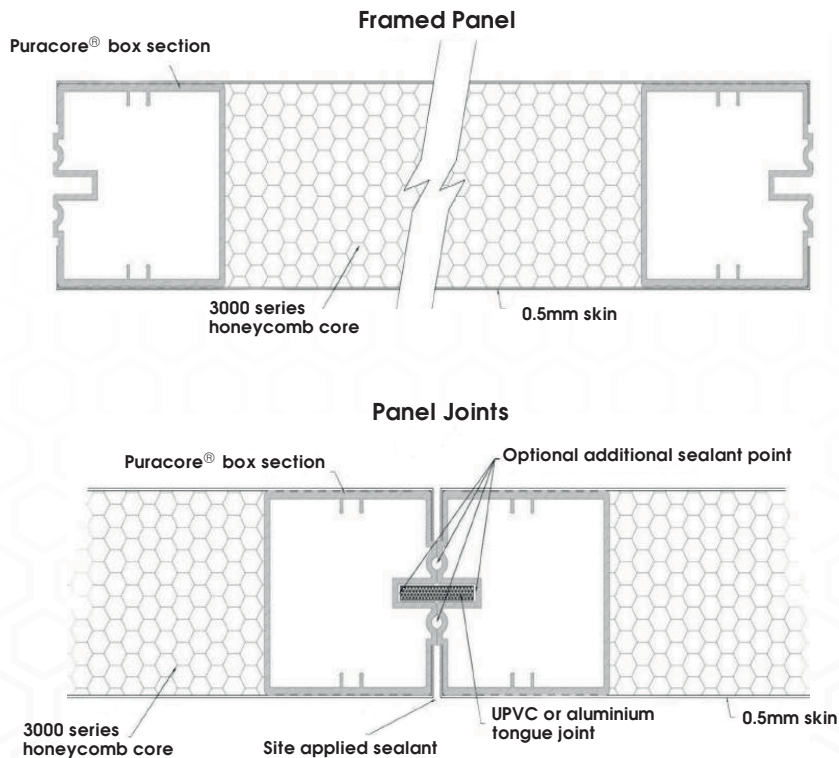
Puracore[®] 50mm aluminium honeycomb core panels are our standard and most popular within the cleanroom panel range. With easy installation and FM approvals, this panel provides a high specification solution with an outstanding strength to weight ratio.

Available with FM approved aluminium honeycomb, mineral fibre, PIR or paper honeycomb.



See over for technical
specifications

50mm Cleanroom Wall Panel



Summary Specification

Thickness	50mm
Standard Dimensions	1200mm x 3000mm
Maximum Length	Up to 6000mm
Core	48.8mm thick $\frac{3}{4}$ " aluminium honeycomb
Facing Skin	0.5mm galvanised steel substrate with specified finish - stainless steel/aluminium powder coat
Finish for Galvanised Steel Substrate	PVC laminate/polyester/primer painted/P.E.T.
Panel Frame	Aluminium 6063 box extrusion 4 sided
Adhesive	Twin pack solvent free adhesive @ 300g/m ² per face
Tongue Options	Flexible PVC/rigid PVC/aluminium 4 side cruciform
Weight	13kg/m ²



Puracore®



Puracore, 3 Portview Road, Avonmouth, Bristol, Avon, BS11 9LQ, United Kingdom



+44 (0) 117 316 7025



sales@puracore.com



www.puracore.com